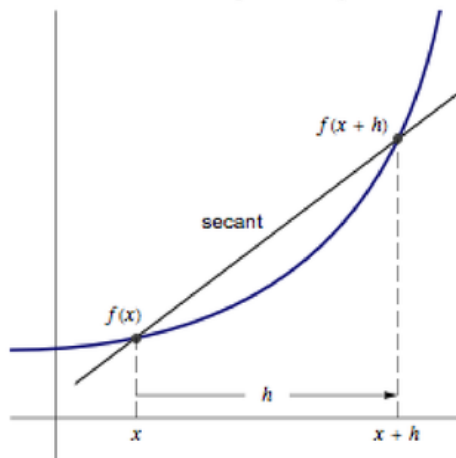


## Difference Quotient Variation

Gives the slope of the secant line joining two nearby points on a curve.



$$f(x) = -x^3 + 5x^2 - 6x + 7$$

$$\frac{f(x+h) - f(x)}{h} = -h^2 - 3hx + 5h - 3x^2 + 10x - 6$$

$$h = 0.9$$

